



## St. Lucie West Services District Ceases Chemical Fluoride Feed Systems Following Court Ruling

Following a recent ruling by a U.S. District Court, the St. Lucie West Services District (SLWSD) has decided to immediately halt its use of chemical fluoride feed systems. The court determined that fluoride levels above 0.7 mg/l present an “unreasonable risk of harm” to both health and the environment, particularly for vulnerable populations, without taking into account costs or other risk factors.

In response to this decision, and based on the recommendation of the Florida Surgeon General, SLWSD suspended its fluoride feed systems until further guidance is issued by St. Lucie County, the Florida Department of Environmental Protection (FDEP), and the State of Florida.

Other municipalities, including the City of Port St. Lucie, have also begun deactivating their fluoride feed systems.

SLWSD will continue to adhere to all current water quality monitoring requirements, including fluoride testing, as directed by FDEP and local authorities, until clearer instructions are received.

SLWSD is dedicated to delivering high-quality water services to St. Lucie West residents and businesses, prioritizing public health and safety while meeting all environmental and regulatory standards. Established in 1990, SLWSD manages a 4,600-acre community and provides potable water, wastewater treatment, stormwater management, and reclaimed water irrigation.

---

**Page 2: Use your water meter to check for possible leaks.**

## We Are Now Accepting Credit Card Payments at Our Main Office!

We're excited to announce that you can now pay your bill by credit card at our main office, 450 NW Utility Dr., Port St. Lucie. A 3.10% processing fee applies, with a \$2.50 minimum.

## We Have a New Logo, and We Want to Hear From You.

Scan the QR code below and take our survey:



## Meet Your Board of Supervisors:

Dominick Graci (Chairman)  
Gregg Ney (Vice Chairman)  
Diane Haseltine (Secretary)  
Rose Carvelli (Alt. Sec.)  
Kevin Dolan (Alt. Sec.)

## Next Public Board Meeting:

Feb. 3 - 4, at our main office building.  
Go to our website for more information.



[www.slwsd.org](http://www.slwsd.org)

Connect with us:

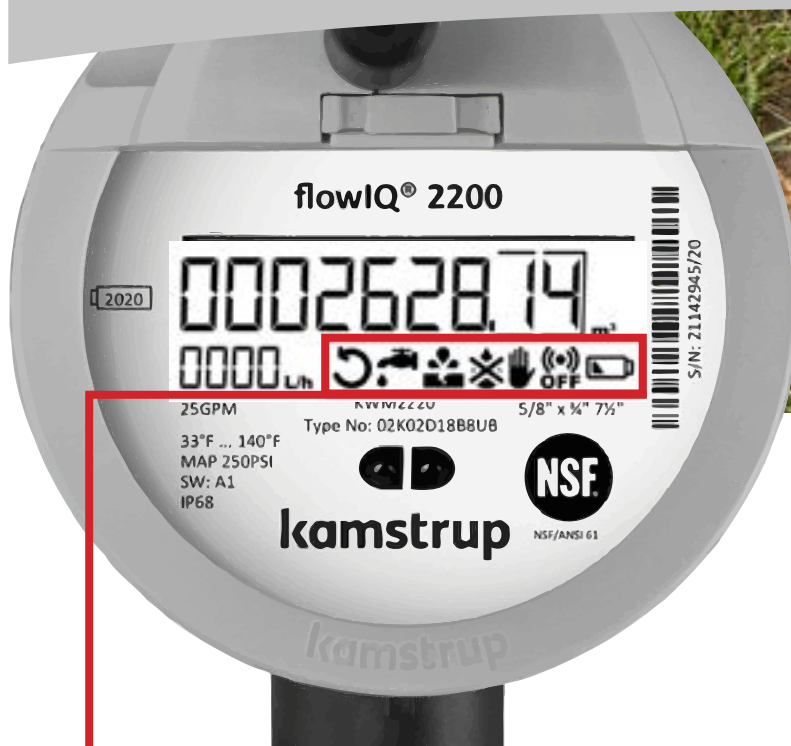


**(772) 340-0220**

[customerservice@slwsd.org](mailto:customerservice@slwsd.org)

St. Lucie West Services District  
450 SW Utility Drive, PSL, FL 34986

# Check for Water Leaks Using Your Kamstrup Meter.



KAMSTRUP Smart Meters are installed outside of your residence or facility. They can aid you in detecting possible water leaks. After checking for leaks on common areas like toilets and faucets, use the meter codes below to identify potential issues.



**REVERSE FLOW:** Arrow shows water flowing the wrong direction.



**LEAK:** Flashing symbol indicates water has flowed for 24 hours, suggesting a leak.



**BURST:** Flashing symbol indicates flow exceeds a preset limit for 30 minute suggesting a pipe break.



**DRY:** Flashing symbol means the meter is not filled with water.



**TAMPER:** Icon shows an attempted fraud, making the meter invalid for billing.



**RADIO OFF:** Indicates the meter is in transport mode with the radio off. It activates automatically after ½ liter of water flows through the meter.



**BATTERY LOW:** Icon indicates battery life is under 6 months.

The information codes and symbols will automatically turn off when the conditions that activated them no longer exist. **If you find a leak, please have it repaired as soon as possible to avoid higher bills. Contact us with any questions at (772) 340-0220 , or [customerservice@slwsd.org](mailto:customerservice@slwsd.org).**